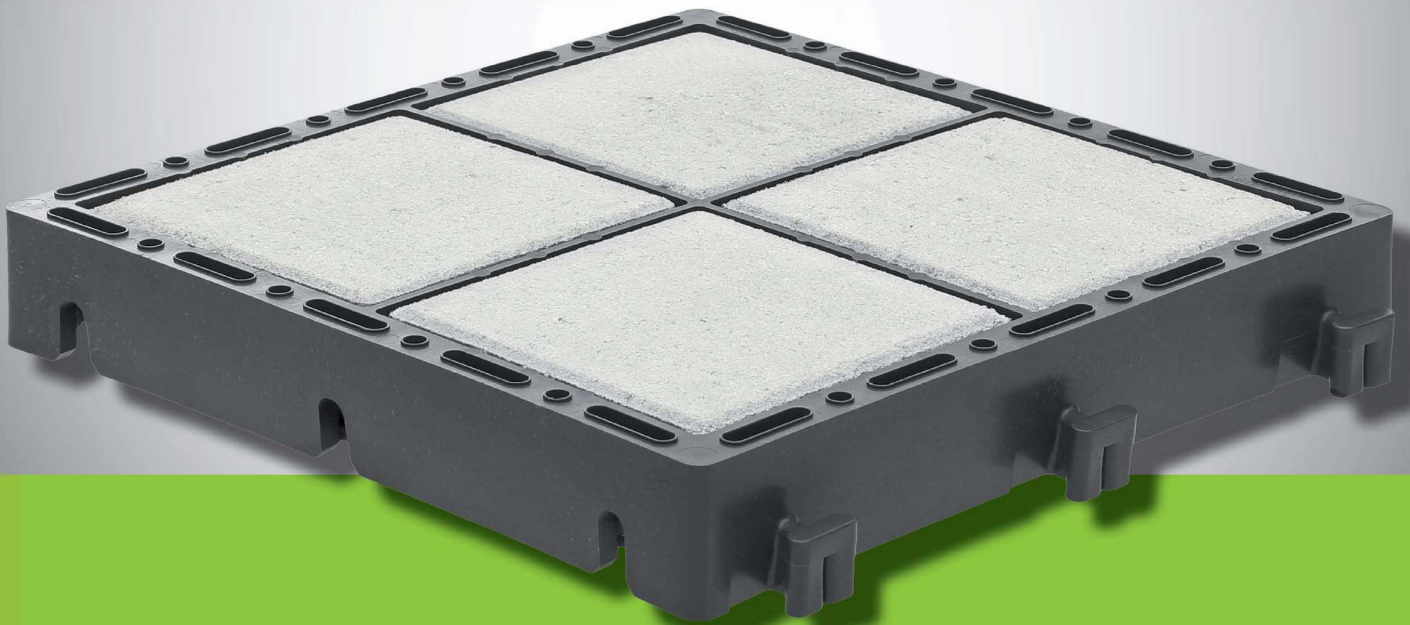


B8 VENTURES



Ground reinforcement system

ECORASTER® BLOXX

Technical Data
Product features

ECORASTER® Bloxx – with integrated drainage joints

For quick and durable permeable paving
in concrete paver design



Technical specifications

Dimensions	13 in x 13 in x 2 in
Weight per sq ft.	17.4 lbs
Weight per unit	20.8 lbs
Carrying load	Exceeds H90 and HL92 (fill/base dependent)
Dimensional stability	Temperature range -58°F to +194°F
Concrete dimensions	5.6 in x 5.6 in x 1.75 in
Pressure resistance	Up to 20 t axle load in acc. with DIN 1072
Material	100% recycled LDPE and concrete
Available colors	Natural, black, red, grey

Delivery units

Packaging unit	1 layer (= 9 pieces = 10.56 sq ft)
Concrete blocks per pallet	432 pieces
ECORASTER® Bloxx Module per pallet	108 pieces
ft² per pallet	128.8
Weight per pallet	approx. 2,200 lbs
Other packaging available on request	

Advantages

- ✓ High performance permeable paving
- ✓ Weather and salt resistant
- ✓ High load, minimal maintenance
- ✓ Very high infiltration rate
- ✓ Resistant to UV and aggressive solvents
- ✓ Seamless fit with other Ecoraster systems
- ✓ Proven safety locking system
- ✓ Made from 100% recycled LDPE
- ✓ German design
- ✓ Environmentally neutral
- ✓ Versatile applications

Suitable for

Heavy construction and landscaping

Parking lots and driveways with snow conditions
Emergency and fire access lanes
Outdoor warehousing and logistic areas
Soft shoulder reinforcement
Streetcar track fill reinforcement
Roads
Oil and mining applications
Pools and decks
Accessible paths and sidewalks